

MARKET QUOTATIONS

BOARD OF TRADE QUOTATIONS

Butter and Cheese
Butter, per lb.—Choice creamery, 37 1/2; fancy creamery, 40c; fancy dairy, 33c; choice dairy, 35c.
Cheese, per lb.—Western twin cream, 25@25 1/2; Young American first cream, 26c; singles, 25 1/2c; domestic Swiss, 25-lb., 50c; round Swiss, 75c; Limburger, per piece, 39c.

Poultry and Eggs
Poultry, per lb.—Hens, mixed, 19 1/2@20; roosters, per dozen, \$5.00@5.25; young chickens, mixed, 20@23c; turkeys, hens, 20@21c; young gobblers, 20@21c; old gobblers, 20@21c; ducks, 16@16 1/2c; geese, \$6.00@6.50.
Eggs, per doz.—Louisiana fresh, 22 1/2@23c; Louisiana candled, 22@23c; Western, 34@35c.

Vegetables
New Potatoes—Louisiana Reds, per hamper, \$2.40@2.55; Louisiana Whites, per bbl., No. 1, \$8.50; No. 2, \$7.00; per bushel, 80 to 90-lb. sacks, \$2.50@2.60.
Potatoes—Oregon, per bushel, \$2.35@2.40.
Cabbage—Louisiana, 31-inch crate, 125-lb. net headed stock, untrimmed, \$2@2.75.

Onions—Louisiana, new crop, Bermudas, per hamper, 50@55c; Creole, per 75-lb. sack, \$1.75@1.85.
Garlic—White, well matured, per lb., 3@4c; La. large double head string, 4c; small, 3 1/2c.
Onions—Louisiana, new crop, Bermudas, per hamper, 50@55c; Creole, per 75-lb. sack, \$1.75@1.85.

Artichokes—California, half-hamper, \$2.90@3.40.
Lettuce—California, per crate, Iceburgs, \$2.00@2.25.
Beans, per lb.—Northern White, 14 1/2c; Northern Pink Kidney, 14 1/2c; Lima, 14 1/2c; Pink, 12 1/2c.
Peas, per lb.—Green, 12 1/2c; Lady, 12 1/2c.

Green Peas—Louisiana, per hamper, \$1.75@2.00.
Cow Peas, per bushel—Tenn. clay, \$3.60; Carolina mixed, \$3.45; whip-poorwill, \$3.15.
Snap Beans—Louisiana round, green, per hamper, \$1.50.
Squash—Louisiana white, per hamper, 50@75c.

Tomatoes—Louisiana, bushel box, \$5@5.10; Miss. flats, \$1.75; No. 2 \$1.00@1.25.
Flour
Hard Spring Minnesota and Dakota, per bbl.—Patent wood pkgs, \$12.75@13.00; patent, 98-lb. cotton and jute, \$12.50@12.75.

Soft Winter Wheat, per bbl.—Patent wood pkgs, \$12.75@13.00; patent, 98-lb. cotton and jute, \$12.75@13.00; straight, 98-lb. cotton and jute, \$12.50@12.75.
Feedstuffs
Corn, bulk on track, per bushel—No. 2 yellow, \$1.82@1.83; No. 3 mixed, \$1.81@1.82; No. 2 white, \$1.83@1.84.

Apples, boxes—Washington Spitzenbergers, extra fancy, \$3.00@3.25; White Winter Permaines, extra fancy, \$3.25@3.50; Winesaps, genuine extra fancy, \$2.50@3.10; yellow Newtown, extra fancy, \$3; Rome Beauty, \$3.25; Arkansas Black, extra fancy, \$3.50; Stayman Winesaps, \$3.50@4.25.
Oranges—Florida, according to size and quantity, \$3.50@4.25; California naval, \$2.25@3.50.

Lemons—California, 420 to 490 size, fancy, \$4.50@5.25.
Pineapples—Cuban stock Red Spanish, per crate, \$2.25@2.50.
Cherries—California, 10-lb. boxes, \$1.75@2.00.
Plums—California Clymans, per 4-basket crate, \$2.50.
Peaches—Georgia, 6-basket crate, \$2.75@3.00.
Apricots—California Royal, per 4-basket crate, \$2.15@2.25.
Cantaloupes—Florida nutmegs, per crate, 45 to 54, 2.75@3.25.
Coconuts—Per 1,000, \$48.00.
Bananas—Large, 9 hands, \$1.90@2.00.

LIBERTY'S WALL THAT MUST NEVER CRUMBLE

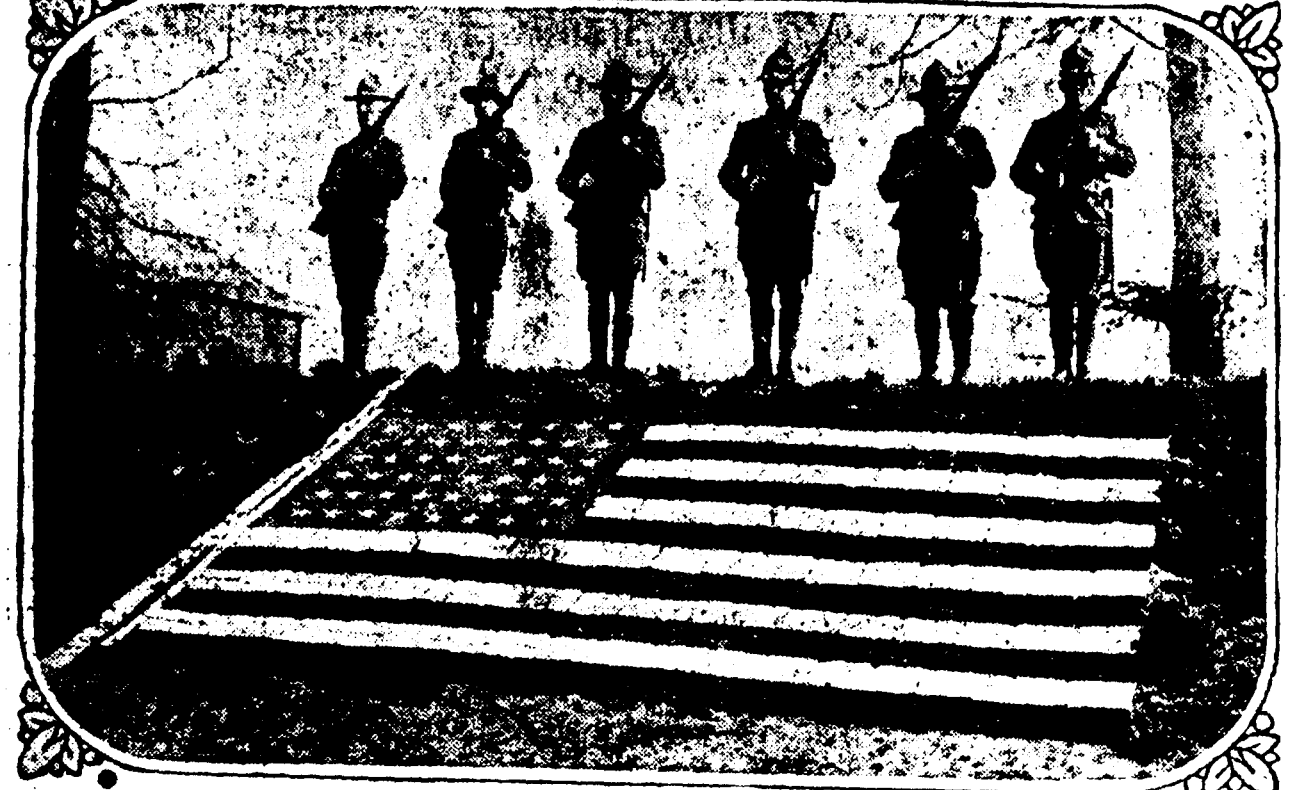


Photo by American Press Association. "Somewhere in America" these soldiers have built on the side of a hill a brick standard of world liberty, and they stand ready to back these same Stars and Stripes, that the world may be made safe for democracy.

WOMEN TO ENTERTAIN SOLDIERS AT CAMP
Arrangements have been made by the Y. W. C. A. to entertain the men of the First Louisiana Infantry on Saturday nights. The Girls Honor Guard already has entertained the men from the naval station and is preparing several other such affairs. Other women's clubs of the city plan to take part in various entertainments for the soldiers.

Table with columns: Daily Bids and Offers, STOCKS, Bid, Asked. Lists various stocks like C. C. Slaughter Hse. Co., D. H. Holmes Co., etc.

Table with columns: Street Railroads, Bonds, City Bonds, Government Bonds. Lists various financial instruments and their values.

Table with columns: Provisions, Pork, Beef, Lard, Bacon, etc. Lists prices for various food items.

American Oculist Looked Upon as Miracle Worker

BY C. F. BERTELLI, International News Service Staff Correspondent.

Paris, July 6.—The remarking of the eye region through the trans-plantation of part of the mucous membrane and the grafting of eyelids and lashes are among the marvels of plastic surgery accomplished in France during the war by Dr. Louis Borsch, the famous American oculist, who, since August, 1914, has been chief ophthalmic surgeon at the huge Grand Palais Military Hospital in Paris.

Dr. Borsch has just returned from a trip to the trenches and field hospitals, which he made at the request of the Department of Health for the purpose of improving existing methods of treating wounds of the eye and saving the vision of the thousands of soldiers who in this latter phase of the war are suffering from such injuries.

"Three years of constant daily experience in the treatment of eye wounds at the Grand Palais," said Dr. Borsch on his return, "has enabled me to witness a very considerable improvement in the methods employed, and very gratifying results are now being obtained. If we could have taken up our task in 1914 with the benefit of the experience we have since acquired, our results would certainly have been more than 100 per cent better."

"The one great lesson we have learned is that our chances of operating successfully in cases of eye wounds are enormously increased when patients are brought to us immediately after they have received their wounds. The same remarks, of course, applies to all wounds, and all surgeons are insisting emphatically upon the need for the lightning transportation of the wounded to hospital.

FIND SUBSTITUTE FOR BONE BLACK

Sugar planters of Louisiana at last have found a substitute for bone black in a rice-black mixture. Experiments were carried out in Audubon park Thursday. This means that the planters are independent of the refinery if they so desire.

For some time the sugar men have been seeking a substitute for bone black and yesterday a ton of sugar was treated with the new process mixture. The rice-black was mixed with the melted Louisiana raw sugar, the mixture boiled a few minutes and then it was run through the filter press.

Immediate manufacture of rice-black on a commercial scale will be begun, probably, and some of the mills in the state that are now engaged in refining Cuban raw sugars may adopt the process and try it out thoroughly this summer.

Hitherto the planters have, with few exceptions, sold their raw sugar to the big refiners, although much of the sugar produced in the state was marketed direct for consumption as clarified sugar.

RED CROSS DRIVE HITS CHARITIES

The Charity Organization is slightly "preved" at the Red Cross. At the meeting Thursday it was said that an organization was forced to borrow \$200 to meet expenses because of the Red Cross drive. In this connection all members were urged to pay up their dues and the directors asked that the citizens assist the charities organization.

Accompanying Dr. Borsch on his visit to Champagne were Consul-General Thacker and Colonel Sabathier, Director of the French Medical Service. Colonel Sabathier will be responsible for the hospital accommodation to be supplied to the American armies destined for France.

"The party penetrated as far as Mont Camille, then the hottest section of the French line, and spent several hours under shellfire from several German batteries. As to the spirit of the troops, Dr. Borsch said: "The poilus and their officers have not the faintest doubt that they are on the road to complete victory.

"The morale of the troops is excellent, the cordiality between the officers and men is admirable, and discipline is perfect. The unanimous opinion of men in every branch of the service, whether artillery, engineers, infantry or aviation, from private to general, is that complete and speedy victory can be obtained by the employment of an overwhelming number of aeroplanes.

"Obscure the enemy's fire sight and carry him perpetually in the rear in this way and the war will be quickly and humanely ended. "We need at least 30,000 aeroplanes on this front, and the greatest service the United States could render to the common cause would be the dispatch of 30,000 machines with trained pilots at the earliest moment practicable.

RAILROAD SCHEDULES

Table with columns: UNION STATION, DEPART, ARRIVE. Lists train schedules for various destinations like Chicago, St. Louis, etc.

Table with columns: DEPART, ARRIVE. Lists train schedules for various destinations like New Orleans, Baton Rouge, etc.

Table with columns: DEPART, ARRIVE. Lists train schedules for various destinations like New Orleans, Baton Rouge, etc.

Table with columns: DEPART, ARRIVE. Lists train schedules for various destinations like New Orleans, Baton Rouge, etc.

Table with columns: DEPART, ARRIVE. Lists train schedules for various destinations like New Orleans, Baton Rouge, etc.

Table with columns: DEPART, ARRIVE. Lists train schedules for various destinations like New Orleans, Baton Rouge, etc.

RAILROAD SCHEDULES

Table with columns: DEPART, ARRIVE. Lists train schedules for various destinations like New Orleans, Baton Rouge, etc.

Table with columns: DEPART, ARRIVE. Lists train schedules for various destinations like New Orleans, Baton Rouge, etc.

Table with columns: DEPART, ARRIVE. Lists train schedules for various destinations like New Orleans, Baton Rouge, etc.

Table with columns: DEPART, ARRIVE. Lists train schedules for various destinations like New Orleans, Baton Rouge, etc.

Table with columns: DEPART, ARRIVE. Lists train schedules for various destinations like New Orleans, Baton Rouge, etc.

Table with columns: DEPART, ARRIVE. Lists train schedules for various destinations like New Orleans, Baton Rouge, etc.

Advertisement for Louisiana Railway and Navigation Co. featuring a \$1.00 round trip to Baton Rouge.

Advertisement for Southern Railway System, highlighting the 'Land of the Sky' route.

Large advertisement for Southern Pacific Excursions, featuring a \$10 round trip to Galveston and Houston.